



파격적인가격

chemiSOLO

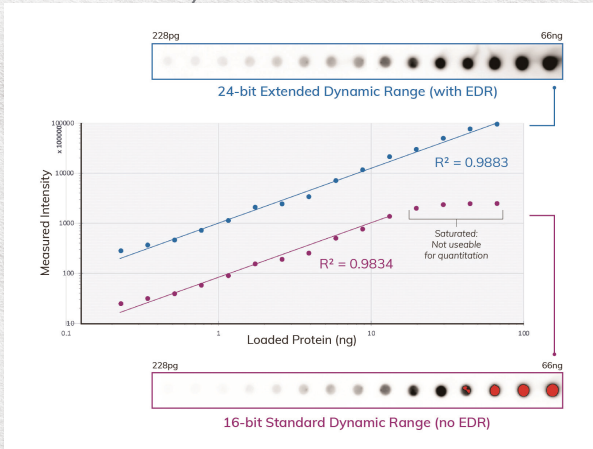
Personal Western Blot Imager



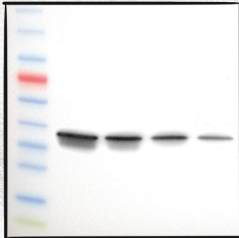
 **PhileKorea**
Specialized in Medical & Bio Science since 2000

Quantitative Data Acquisition

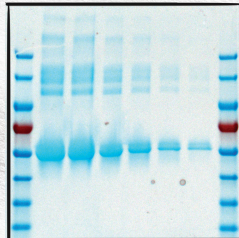
chemiSOLO 의 Extended Dynamic Range는 Saturation 없이 더 넓은 범위에서 Linearity로 가집니다.



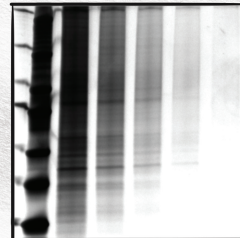
Flexible Imaging Options



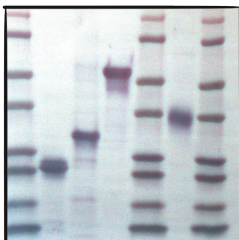
Chemiluminescent Blot
with Color Marker



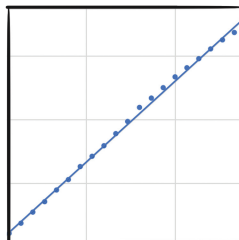
Coomassie Stained
Protein Gel



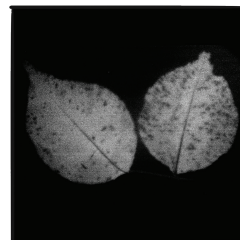
Silver Stained
Protein Gel



Colorimetric
Stained Blot

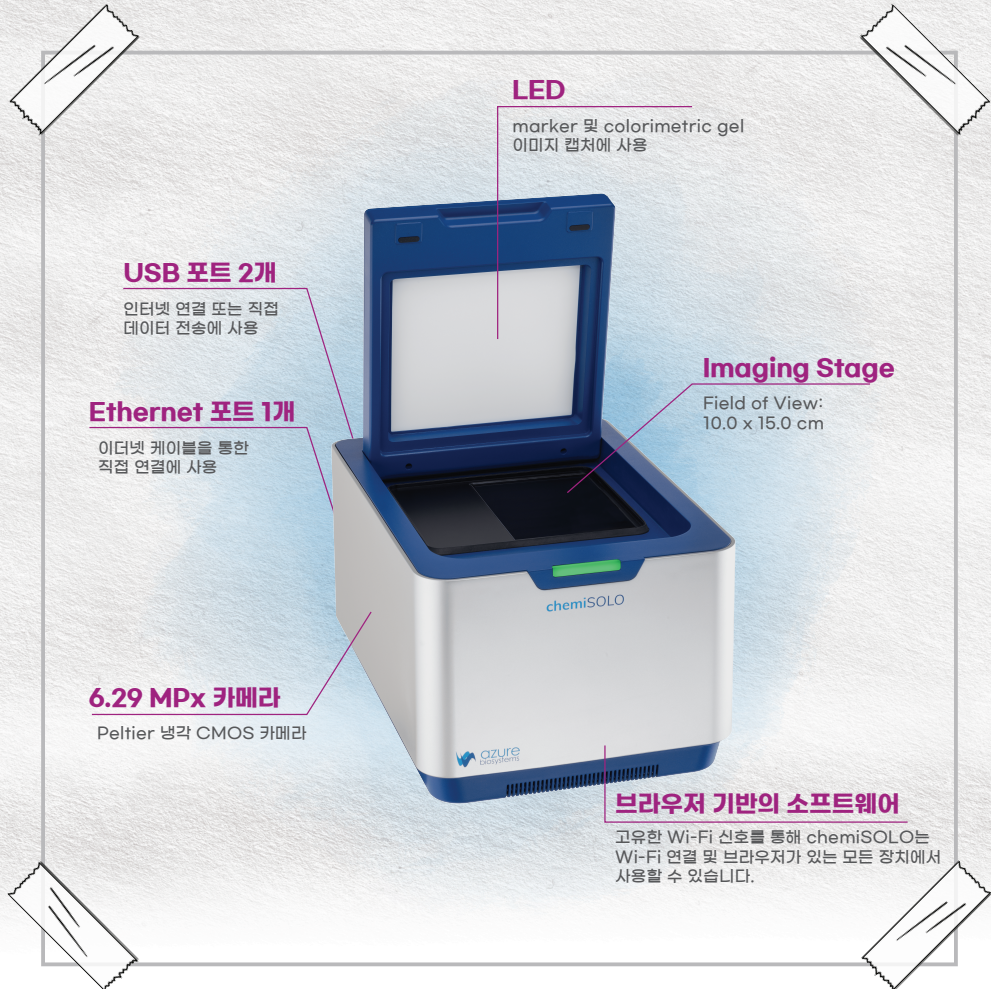


Densitometry



Plant
Bioluminescence

Advanced Technology



Specification

chemiSOLO	Specifications
Part Number	CS1000
Camera	6.29MPx back-illuminated CMOS, 16-bit, 65,536 grayscale
Peltier Cooling	-40C regulated cooling from ambient
Applications	Chemiluminescent Imaging with Visible Marker, Densitometry, Visible Gel Imaging in Color and Grayscale
Light Source	LEDs
Field of View	10 x 15 cm (4.0 x 5.9 in)
Footprint (W x H x D)	29.2 x 22.2 x 43.2 cm (11.5 x 8.75 x 17.0 in)
Weight	9.1kg (20lbs)
Certifications	CE RED, cTUVus, CB scheme, RoHS



(주)필코리아테크놀로지

서울 : 08507 서울 금천구 가산디지털1로 168 우림라이온스밸리 B동 102호 / 02-2105-7020

대전 : 34025 대전 유성구 테크노2로 187 (용산동), 미건테크노월드 2차 B동 111호 / 042-862-9636

· <https://www.philekorea.kr> · E-mail : info@philekorea.co.kr