



Nucleic Acid Automatic Extraction System

A cost-effective extraction system



taco™ Nucleic Acid Automatic Extraction System can process up to 24 samples in 50 minutes based on the magnetic bead extraction method. Its built-in UV lamp helps to greatly reduce the possibility of cross-contamination. There is no need to input parameters; users simply press a single button to start. In addition to its high efficiency and user-friendly design, the **taco™ Nucleic Acid Automatic Extraction System** provides a cost-effective solution to meet the needs of DNA/RNA purification.

Features

- **Fast** : 50 minutes for 24 samples
- **Simple** : One-touch operation with LED status indication
- **No cross-contamination** : Built-in UV lamp for decontamination
- **Versatile** : Sample types including animal tissues, plant tissues and human specimens (serum, plasma, buffy coat, whole blood, urine and respiratory swab)

Performance

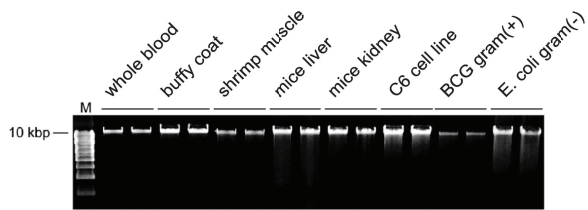


Fig 1. With taco Total DNA Extraction Kit, genomic DNA can be extracted from various sample types.

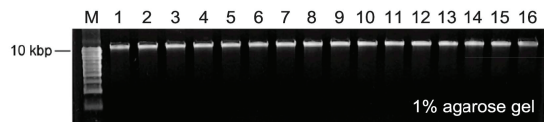


Fig 2. With taco Total DNA Extraction Kit, the result shows high consistence among samples from the same person's whole blood.

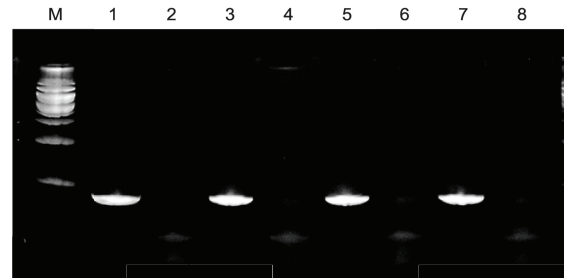
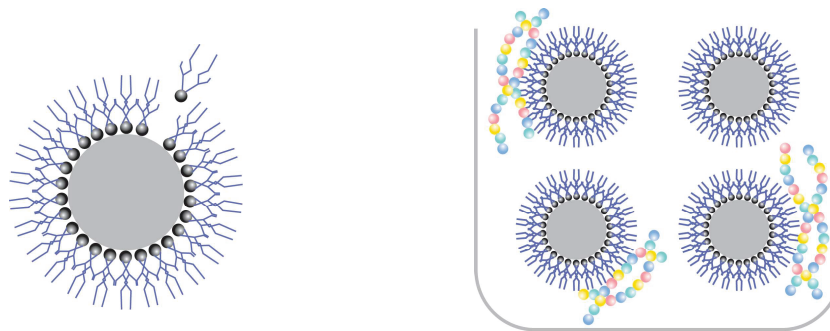


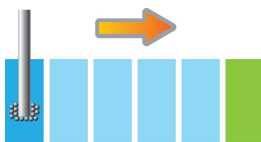
Fig 3. No cross-contamination to neighbor well. PCR templates are extracted from 200 ul spiked plasmid (1×10^6 , lane 1, 3, 5, and 7) and non template control (lane 2, 4, 6 and 8).

Principle of magnetic bead extraction

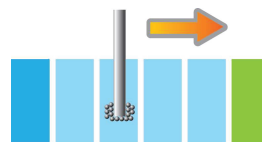


Magnetic beads are surface-modified.

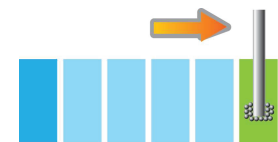
The magnetic beads are capable to bind nucleic acids.



Break the cell in Lysis Buffer (deep blue). The nucleic acid from broken cell will be bound to the surface-modified magnetic beads.



Wash the beads for three times in Washing Buffer (light blue).



Release DNA from magnetic beads in the Eluting Buffer (green) and remove the beads with a magnetic bar.

Fig 4. Illustration of magnetic bead extraction

taco Automatic Nucleic Acid Extraction System

Throughput	24
Dimensions (W x D x H)	42 cm x 30 cm x 38 cm
Weight	Approx. 23.4 kg
Run time	Within 50 minutes
Power input	100-120 V / 200-240 V AC, 50 / 60 Hz, 2A
UV Lamp	4 W

*CE-IVD model available. Not U.S. FDA cleared or approved yet.

taco Nucleic Acid Extraction Reagent

Kits for research use	taco™ Total DNA Extraction Kit
	taco™ DNA/RNA Extraction Kit
	taco™ Plant DNA/RNA Extraction Kit
	taco™ Preloaded Total DNA Extraction Set
	taco™ Preloaded DNA/RNA Extraction Set
CE-IVD Kits	taco™ Total DNA Extraction Kit
	taco™ DNA/RNA Extraction Kit
	taco™ Preloaded DNA/RNA Extraction Set

*Not U.S. FDA cleared or approved yet.

tacoTM Prep Bead Beater

Fast and Efficient Homogenization System



Fast and Efficient

- Irregular 3D collision of beads for efficient homegenization within seconds.

User Friendly

- Easy one-button operation.
- Single knob control.
- OLED screen for clear display.



Flexible

- Various sample types including animal tissues, plant tissues and microorganisms.
- Adjustable cycle number.

Specification

□ Dimensions	300 mm × 250 mm × 240 mm
□ Weight	11 kg
□ Power Supply	100~120/200~240 V AC, 50/60 Hz, 2A
□ Sample Capacity	Up to 16 samples per run
□ Cycle Duration	13 sec/cycle or 40 sec/cycle
□ Accessories	tacoPrep Preloaded Steel Bead Tubes - 100 pcs/package tacoPrep Beating Tubes (2.0 ml) - 500 pcs/package tacoPrep Steel Beads (2.5mm) - 200g/package



taco™ Prep Bead Beater

Cat No.	Product Description
ATPB-01	tacoPrep Bead Beater (Throughput 1-16)
A-PSBT	tacoPrep Preloaded Steel Bead Tubes (100pc / box)
A-PSB	tacoPrep Steel Beads (2.5 mm) (3000 pcs / btl)
A-PST	tacoPrep Beating Tubes (2.0 ml) (500 pcs / bag)



taco™ mini Automatic Nucleic Acid Extraction System

Cat No. **ATCD-8**
Sample Throughput 1-8

taco™ Nucleic Acid Automatic Extraction System

Cat No. **ATCD-24**
Sample Throughput 1-24



Related Product

Cat No.

atc-drna_24
atc-dna_24
atc-plant_24
atc-Preloaded_drna_24
atc-Preloaded_dna_24

Product Description

taco DNA/RNA Extraction Kit (320)
taco Total DNA Extraction Kit (320)
taco Plant DNA/RNA Extraction kit (320)
taco Preloaded DNA/RNA Extraction Set (48)
taco Preloaded Total DNA Extraction Set (48)

GeneReach

Headquarter

GeneReach Biotechnology Corp.
No. 19, Keyuan 2nd Road, Central Taiwan Science Park,
Taichung City 407, Taiwan
TEL +886-4-2463-9869 FAX +886-4-2463-8255

(주)필코리아테크놀로지

서울
서울 금천구 가산디지털1로 168
우리라이온스밸리 B동 102호 [08507]

TEL 02-2105-7020 FAX 02-2105-7025

USA office

GeneReach USA
27 Revere Street, Lexington,
MA 02420, USA

대전
대전 유성구 테크노2로 187
미건테크노월드 2차 B동 111호 [34025]
TEL 042-862-9636

www.genereach.com
sales@genereachbiotech.com

www.philekorea.kr
info@philekorea.co.kr

PhileKorea
Specialized in Medical & Bio Science since 2000