

# DeNovix®

# CellDrop™

## Count Cells Without Slides™



Patented  
US 10,302,568  
US 10,598,598  
JP 6579475

Independent reviews from [SelectScience.net](http://SelectScience.net)

“ Game changing. ”

– A. Rousseau, MRC PPU

Rating: 5.0 ★★★★★

“ Every cell room should have one! ”

– F. Fomeris, University of Pavia

Rating: 5.0 ★★★★★

“ CellDrop is a great cell counter! ”

– T. Smith, Duke University

Rating: 5.0 ★★★★★



Reviewers' Choice  
Life Sciences Customer Service  
Company of the Year

**Brightfield and Fluorescence Automated Cell Counters**

## Count Cells Without Slides™

DeNovix CellDrop™ Automated Cell Counters combine patented DirectPipette™ sample loading with advanced fluorescence and brightfield optics as the new standard in cell counting.

The CellDrop Family removes the need for disposable slides from routine cell counting bringing low-volume, consumable-free analysis to the cell biology lab.

CellDrop received the Best New Life Science Product of the Year at the 2020 Scientists' Choice Awards®.

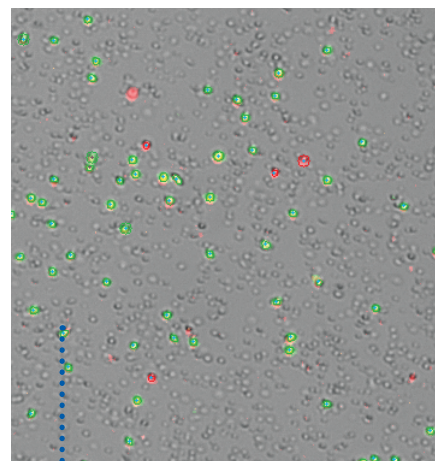


## Eliminate Slide Costs

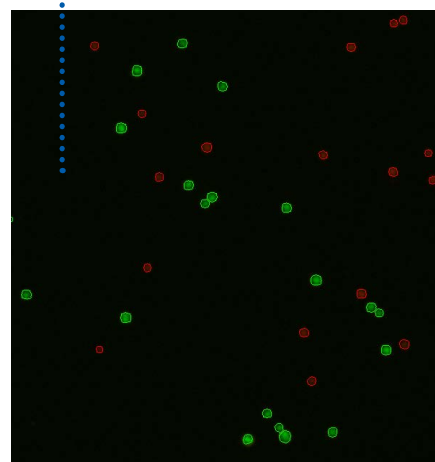
- No Purchase Costs
- No Slide Disposal Fees
- Never Run Out of Stock
- No Shipping or Storage Costs

## Accurate Across the Widest Dynamic Range

CellDrop's variable volume counting chamber will automatically keep your cells in the optimal range for the most accurate results and eliminate need to dilute or concentrate many samples.



PBMCs: discriminate between live/dead and non-nucleated cells.



Accurate High Definition Edge Detection with regular and irregular cells, even at high density.



EasyApps® software comes preinstalled with cell counting and viability apps for AO/PI, Brightfield, Trypan Blue, GFP, Yeast as well as powerful tools for creating custom applications.

## Reduce Plastic Use in Your Lab

An estimated 5.5 million metric tons of single-use plastic waste is generated by life science labs annually\*. As plastic pollution becomes ever more pervasive, innovation to assist researchers to reduce this problem is increasingly urgent.

Accelerate your research and improve the sustainability of your lab by removing the environmental impact of disposable plastic slides.

# CellDrop™

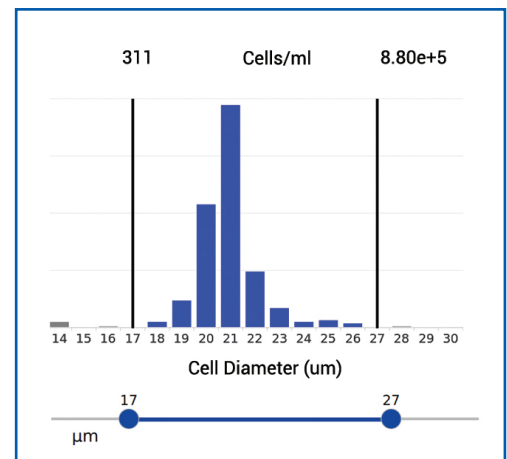
### DirectPipette Technology

Drawing on the SmartPath® Technology from the award winning DS-11 Series, CellDrop brings the familiar Load, Measure & Wipe Clean functionality of microvolume spectrophotometers to cell counting. Simply lower the arm, pipette 10µL of cells and press count. Wipe clean with a dry lab wipe and the CellDrop is ready for the next sample with no concerns about carryover.

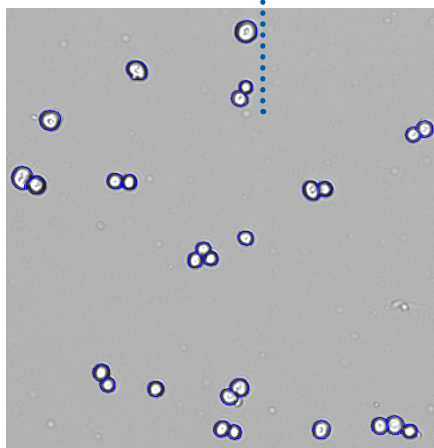


## The Most Powerful, Easy-To-Use Cell Counter Platform

- Three-Channel Image Overlay
- Cell Gating and Cell Size Histograms
- Advanced Declustering Algorithms
- Unlimited Custom User Methods and Protocols
- Powerful Data Reporting
- Password-Protected User Accounts



Cell Size Histograms enable simple size gating and exclusion other cell populations or debris



Advanced Declustering Algorithms embedded in EasyApps software improve accuracy and reproducibility even with the most challenging cells

### ● Dual Fluorescence and Brightfield Options

The CellDrop offers the ultimate in flexibility to meet the needs of today's leading cell culture labs. The CellDrop FL combines dual fluorescence optics with brightfield illumination to provide the widest feature set for current and future application needs. The CellDrop family also includes the CellDrop BF, Brightfield Cell Counter, ideal for labs to automate and reduce the cost of trypan blue counting.

\* Mauricio A. Urbina, Andrew J. R. Watts, Erin E. Reardon. *Environment: Labs should cut plastic waste too.* Nature, 2015; 528 (7583): 479 DOI: 10.1038/528479c

## Hazardous Samples?

The small footprint and onboard processing allow the CellDrop to fit inside most flow hoods. For applications that require the cells to be contained when reading, the CellDrop family has the option to use common disposable plastic slides and reusable slides without the need for additional adaptors.



## Pay-As-You-Go

Get all the convenience of consumable-free cell counting with a lower initial investment. Our PAYG option is ideal for labs with smaller capital budgets or lower throughput. Simply purchase a bundle of Count Codes according to your lab needs and EasyApps will use one for each sample measured.

Apply codes to a single account or share amongst users. With the robust admin options available in EasyApps® you are in control and if your needs change, simply upgrade to the Unlimited (UNLTD) version of the CellDrop product.

## Other Products from DeNovix



### DS-11 Series

1 µL Spectrophotometer / Fluorometer



### QFX

4-Channel Fluorometer



### DS-C

Cuvette UV-Vis Spectrophotometer

## Specifications

<b>Dynamic Range</b>	7 x 10 <sup>2</sup> to 2.5 x 10 <sup>7</sup> cells/ml
<b>Sample Volume</b>	5.0 µL (high density), 10 µL (standard), 40 µL (low density)
<b>Measurement Speed</b>	Brightfield 3 seconds AO/PI - 8.5 seconds
<b>CellDrop FL Modes</b>	Dual Fluorescence Single Fluorescence Fluorescence + Brightfield
<b>CellDrop BF Modes</b>	Brightfield only
<b>Sample Surfaces</b>	Optical Sapphire
<b>Brightfield Illumination</b>	LED 530 nm
<b>Fluorescence Illumination</b>	LED 470 nm
<b>Emission Filters</b>	AO 525 nm +/- 25 nm, PI 645 nm +/- 37 nm
<b>Gesture Recognition</b>	Multipoint touch, swipe, pinch
<b>Display</b>	High Definition 1280 x 800 7" color display
<b>Glove Compatibility</b>	All common lab gloves
<b>Camera</b>	FL: Basler acA2040-55um; BF: Basler daA2500-14um

<b>Images</b>	FL: 2048 x 1536 px (3.15 MP) BF: 2592 x 1944 px (5 MP) with overlay capabilities
<b>Focus</b>	Software controlled course and fine adjustment
<b>Detector</b>	FL: Sony IMX265 BF: ON Semiconductor MT9P031
<b>Processor</b>	NVIDIA Tegra K1 with Quadcore ARM Cortex-A15
<b>Connectivity</b>	Wi-Fi, Ethernet, HDMI, 3 USB ports
<b>Footprint (LxWxH)</b>	37cm X 21 cm X 18 cm
<b>Weight</b>	8 kg
<b>Operating Voltage</b>	12 VDC
<b>Approvals</b>	UL/CSA, CE, FCC, Japan CAB
<b>Manufacture Location</b>	USA
<b>Warranty</b>	2 Years
<b>Colors</b>	Arctic White
<b>Internal Storage</b>	120 GB solid state drive - upgradable to 1 TB
<b>Accessories</b>	Barcode reader, keyboard, mouse

(주)필코리아테크놀로지

서울 : 08507 서울 금천구 가산디지털1로 168 우림라이온스밸리 B동 102호 / 02-2105-7020

대전 : 34025 대전 유성구 테크노2로 187 (용산동), 미건테크노월드 2차 B동 111호 / 042-862-9636

· <https://www.philekorea.kr> · E-mail : [info@philekorea.co.kr](mailto:info@philekorea.co.kr)